

Distribution partner

**PCC**   
PRESS CONNECTING COMPONENTS



**PCC  PRESS STEEL HD**



PCC GmbH  
P.O. Box 1509  
71305 Waiblingen  
Germany

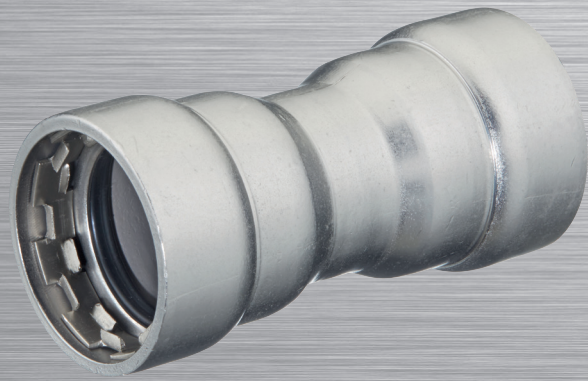
Tel.: +49 (0) 71 51-168 85-0  
Fax: +49 (0) 71 51-168 85-99

[info@pcc-press.de](mailto:info@pcc-press.de)  
[www.pcc-press.de](http://www.pcc-press.de)

2020 PCC GmbH, FL HD 2020-03 ENG







**NO MORE WELDING!**

Now  
thick-walled steel pipes  
can be pressed too



Press fittings made of carbon steel in dimensions 1/2" - 2" (2 1/2", 3" and 4" coming soon) for heating, cooling, compressed air and sprinklers installations as well as for industrial and other applications.

- ✓ fitting body made of carbon steel with zinc nickel coating for highest requirements
- ✓ all important product types available
- ✓ for steel pipes according to DIN EN10255 (threaded pipes), DIN EN10220/10216-1 and DIN EN10220/10217-1 (boiler pipes) seamless or welded, black or galvanised, painted or other coatings\*\*
- ✓ for steel pipes according to ASTM (USA) A53, A106, A135 and A795 (pipe schedule 5 to 40)
- ✓ leaking before pressing
- ✓ radial pressing enables economic and fast connections
- ✓ pressable with all suitable and system-compatible pressing tools/press slings/press chains with system-compatible pressing contour HD



\*oil-free, \*\*on request

## OUR PRODUCT RANGE

for the installation of steel pipes according to DIN EN10255 (threaded pipes), DIN EN10220/10216-1 and DIN EN10220/10217-1 (boiler pipes) in dimensions 1/2", 3/4", 1", 1 1/4", 1 1/2" and 2" as well as of steel pipes according to ASTM (USA) A53, A106, A135 and A795.

			
coupling 2800	sleeve coupling 2804	end cap 2841	straight adapter male 2801
			
straight adapter female 2802	bend 90° f/f 2820	bend 90°m/f 2821	bend 45° f/f 2823
			
bend 45° m/f 2824	straight reduction 2803	male reducer m/f 2843	t-coupling female 2812
			
t-coupling 2810	t-coupling reduced 2811	flange 2840	male union 2808

PCC PRESS STEEL HD complies with the highest requirements of heating, cooling, compressed air and firefighting systems installations as well as of industrial and other applications. PCC PRESS STEEL HD is not suitable for drinking water installations.